

DISHMASTER® Model 2000

Single handle kitchen faucet with dishwashing spray and brush

THE ENERGY FREE DISHWASHER

- Washerless Valve
- Single Handle Control
- High Clearance Spout
- Water Saver Aerator
(2.5 gpm @ 80 pounds Pressure)
- Soft Nylon Wash Brush and
Heavy Duty Pot & Pan Brush
Included (easy twist on & off)
- Fits Standard 3 or 4 Hole Sink
- Chrome Finish
- Easy Do it Yourself Installation
- 5 Year Limited Warranty

DISHMASTER
Quality, Convenience and
Value since 1948



Dishmaster liquid detergent

- No Phosphates
- No Enzymes
- Biodegradable



Simple and easy to use.



Add 4 tablespoons of liquid dishwashing detergent to the reservoir located under the sink with water. Concentrated Dishmaster Detergent is recommended.



Lift knob to direct water flow from faucet to brush.



Press red detergent button for **suds**, release for **clear rinse**.

More Than A Kitchen Faucet

Pull out spray hose delivers clear rinse water or dishwashing suds from the detergent reservoir located under the sink. Use Dishmaster to pre-rinse before loading the automatic dishwasher, or use for all your dishes. Perfect for doing: Electric cookware, Pots & Pans, Skillets, Coffee Pots. Safe for fine China and Crystal. All cookware cleans easily with a DISHMASTER.



Compliant to
ANSI/NFPA 679

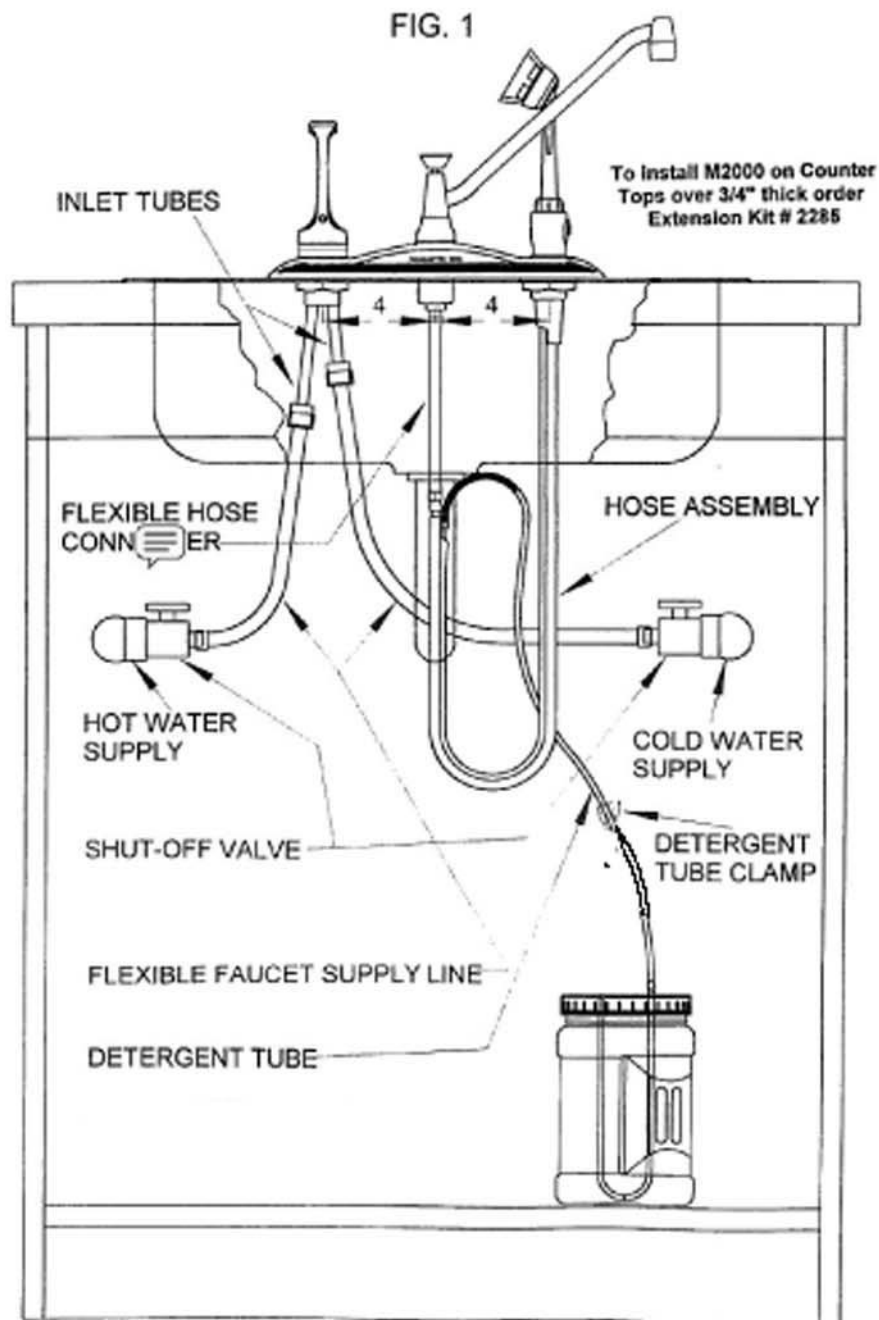
for installation or service advice
call toll free 1-800-521-9234
Monday thru Friday 8:00 a.m. to 5:00 p.m.
Eastern Time Zone

In the interest of better quality and value, we are constantly improving and updating our product. Consequently illustrations or statements on this package may sometime differ from the model enclosed.



Made in the U.S.A. by
SilverStream LLC
Bloomington, Indiana
www.dishmaster-faucet.com

FIG. 1



DISHMASTER MODEL 2000 INSTALLATION INSTRUCTIONS

**Your sink must have 3 holes on 4" centers at least 1 ¼" in diameter
To install your DISHMASTER 2000**

Read complete instructions before starting installation.

1. Turn off the Hot & Cold water valves under your sink. (FIG.1) If you do not have shut off valves under your sink, you must shut off your water at your pump or meter.
2. If you do not have Shut-off valves under your sink, we recommend you install them while making this installation.
3. Remove your present water faucet from your sink; be sure to remove any old gaskets or plumbers putty used to seal your old faucet to your sink. A "plumbers basin wrench" is available at a nominal cost from hardware stores if required for the removal of your old faucet nuts under the sink
4. Align black rubber gasket around holes in sink, with the DISHMASTER label facing the front of the sink; slide inlet tubes, flexible hose connector and hose guide through holes in sink. Align chrome cover with black rubber gasket. (FIG. 1)
5. Slip washer then nut over inlet tube fittings and screw nut onto valve body, now place second washer and nut on hose guide and tighten both nuts securely to sink. (FIG. 1) **DO NOT SPREAD INLET TUBES UNTIL NUTS ARE IN PLACE.**
6. Before attaching the DISHMASTER M2000 (or M2000L) to the water lines, flush pipes of all chips and foreign matter by turning on the water momentarily, being careful not to spray water all over your kitchen. Hold a towel over the end of the pipes or valve, or a pan or bucket could be used to catch the water while performing this operation.
7. Slide the end of the hose assembly through the hose guide from above the sink and connect the brass fitting to the flexible hose connector under the sink. Tighten securely.

**Caution black hose must be free to move. DO NOT loop hose
Around water supply lines or drainpipes.**

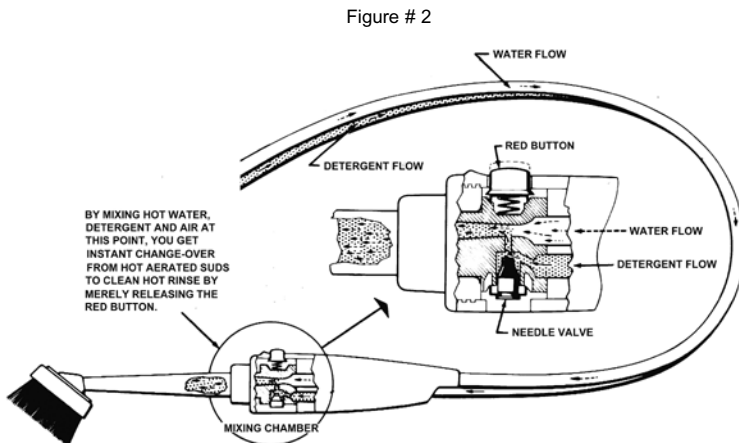
8. Connect the clear plastic detergent tube to the Copper Tube on the black hose (if it has been disconnected). Connect the detergent tube (FIG. 1).
9. We recommend attaching your water lines to the DISHMASTER with flexible faucet supply lines. The inlet tube fitting is ½ " IPS. The second fitting on the supply line is determined by the size required for your shut off valves.
10. Spread the inlet tubes slightly to allow connection of the cold water line.
11. **CAUTION: YOUR HOT WATER LINE MUST BE CONNECTED TO THE LONGEST INLET TUBE.**
12. Turn water on slowly and check all connections for any possible leaks.
13. Place the detergent tank in a convenient location in your under sink cabinet.
14. Avoid crimping or placing any objects on the detergent tube, as this will prevent the flow of detergent to your DISHMASTER.

OPERATING INSTRUCTIONS

YOUR DISHMASTER IS DESIGNED TO USE LIQUID DETERGENTS ONLY. DO NOT USE SOAPS OR SOAP POWDERS. ALWAYS USE A LIQUID DETERGENT AND USE ONLY FOUR (4) TABLESPOONS FULL TO A TANK OF WATER. THE DETERGENT TANK HOLDS 64 FLUID OUNCES.

1. Close detergent tube clamp, remove the Tank Lid and pour Four Tablespoons of "Liquid Detergent" into the Detergent tank, then fill the remainder of the tank with warm water. Other brand name liquid detergent may work in your Dishmaster, (except for lemon scented, which will cause deterioration of the copper tube on the hose). We recommend that you use "DISMASTER LIQUID DETERGENT" as it was developed especially for use in your DISHMASTER.
2. Replace the detergent tank under the sink, now release the detergent tube clamp.
3. Turn on the HOT water and allow it to run a few seconds or until it reaches full heat, then adjust the single lever valve to obtain the water flow and temperature from the spout desired for washing dishes. **CAUTION USING ONLY HOT WATER MAY CAUSE PERSONAL INJURY.**
4. Pick up the Dishwashing handle and point Brush into sink, Pull up on the black knob on the spout to direct the flow of water through the Brush.
5. Direct the water spray onto your dishes and press the RED BUTTON on the handle for suds; release the RED BUTTON for clear hot rinse.
6. When finished washing dishes, turn off your faucet and replace the Dishwashing Handle into the Hose Guide.

A MINIMUM OF 20 POUNDS OF WATER PRESSURE IS REQUIRED FOR THE SATISFACTORY OPERATION OF YOUR DISHMASTER



Your DISHMASTER® has a double or Figure 8 hose which carries hot water and detergent to an all Nylon Brush with a Built-in scraper, through a heat resistant Nylon Handle. The RED Push Button gives instant automatic control over clean hot suds and clean hot rinse for each and every dish. See FIG. 2

Your DISHMASTER uses very little detergent. Too much detergent congeals and cannot be drawn through the hose. We recommend using no more than 4 tablespoons full of liquid detergent per tank full of water. Periodically, fill the detergent tank with hot water only (no detergent). Turn on your DISHMASTER and Pick up the Dishwashing handle and point Brush into sink, Pull up on the black knob on the spout to direct the flow of water through the Brush. Push in on the RED BUTTON and allow the hot water from the detergent tank to flow through the hose for a few minutes, this will help dilute any congealed detergent in the tank and hose. Refill detergent tank with the proper solution of detergent and water

INSTRUCTIONS FOR BACKFLUSHING

IF YOUR DISHMASTER DOES NOT DRAW SUDS PROPERLY, FOLLOW THE SIMPLE PROCEDURE SHOWN BELOW. IT TAKES ONLY A FEW MINUTES - NO TOOLS ARE NEEDED

1. First check the detergent solution. It should not be much thicker than water itself. If you find a thick gummy solution in the bottom of the tank, WASH IT OUT.
2. Check the small hole in the bottom of the Tank Vent Tube. If it is clogged, open it with a hairpin or small wire. Rinse hole in tank vent tube with warm water.
3. Remove Spray Tube Assembly from the handle by unscrewing it with your fingers, you may need to use pliers, if so wrap a cloth around nut to avoid damaging it.
4. Open the single lever valve to allow ONLY A SMALL STREAM OF COLD WATER to flow from the spout.
5. Place your index finger over the end of the venturi tube and hold the Red Detergent Button on the handle down with your thumb.
6. Pull up on the diverter knob with your other hand. This simple operation will force the water back through the detergent line of the hose and out through the Tank Vent Tube, thus flushing out any foreign matter or congealed detergent which may have had the hose blocked. (If the water does not come out of the Tank Vent Tube, open the water valve a little more and repeat the procedure).
7. Now screw the Spray Tube Assembly back into the handle and try your DISHMASTER to see if it draws suds properly. If you do not get any suds or if the suds will not shut off then you may need to replace either the Needle Valve Kit No. 264 or the Hose Assembly No. 252 or No.1235.

**FOR SERVICE ADVICE OR INFORMATION
CONTACT: SilverStream LLC
Bloomington, Indiana
(CALL TOLL FREE 1-800-521-9234)
VISIT OUR WEB SITE AT <http://www.dishmaster-faucet.com>**

REPAIR --- MAINTAINANCE & GENERAL UPKEEP

A MINIMUM OF 20 POUNDS OF WATER PRESSURE IS REQUIRED FOR SATISFACTORY OPERATION OF YOUR DISHMASTER®.

WATER VOLUME - Per government standards (ANSI A112.18.1M) your Dishmaster delivers 2.2 gallons of water per minute at 60 pounds per square inch of pressure.

If you do not get sufficient water volume, perform the following sequence of steps until the problem is solved.

FIRST - Clean the aerator on the end of the faucet spout. Unscrew the aerator from the faucet. NOTE: Turn on the water with the aerator removed. If the water flow is still insufficient, the problem is not with the aerator, proceed to SECOND step. If removing the aerator restores the water flow, clean the aerator as outlined in the next paragraph.

Inspect the unit for foreign matter, debris or mineral deposits. If necessary, a small wire or pin can be used to clear the holes. Rinse the unit to clear any loose particles. If needed, remove the rubber washer from the back of the aerator and remove the plastic insert. To remove the insert of the aerator, press gently on the end of the unit to free the red and white insert. If particles can be seen inside the insert, blow air through the insert in the reverse direction from the water flow. Reassemble the aerator. Screw the aerator back on to the faucet. CAUTION, TIGHTEN FINGER TIGHT ONLY. If water flow is still insufficient, replace the aerator with DISHMASTER repair kit 1178.

SECOND - If water flow from spout with aerator tip assembly removed was insufficient, it will be necessary to remove the spout assembly. WATER SUPPLY TO DISHMASTER NEED NOT BE SHUT OFF FOR THIS PROCEDURE. With valve lever in off position, unscrew spout retaining nut on large spout end, if pliers are necessary to loosen spout retaining nut, be sure to pad pliers jaws to avoid damage to chrome retaining nut. Pull straight up on spout to remove it from Dishmaster. Use a 3/16 " Allen wrench and unscrew the spout section insert and remove it. If the 8 hole disk remains in the spout section, you can bend a piece of wire (you can use a paper clip) so it has about a 1/8 " long lip to remove the disk. Now remove the internal screen and clean off any debris or foreign matter. Use a paper towel to clean the inside of the spout section. Be sure the holes in the 8-hole disk are not clogged and you have all three O-rings removed from the spout section before reassembling the insert assembly (FIG. 4). Reinstall screen in spout section, be sure bottom of screen is centered on O-ring recess (FIG 5), screen must not touch edge of recess. Screw insert assembly into threaded hole in O-ring recess approximately 3½ turns stop when insert will not turn. **CAUTION: DO NOT OVERTIGHTEN INSERT.** To replace Chrome Spout (lift up on diverter rod as far as it will move and hold it there), while inserting large spout end completely into spout section and tighten spout retaining nut hand tight plus ½ turn with padded jaw pliers.

THIRD - Turn on water and check water flow, if it is still insufficient you may need to have the pipes supplying your Dishmaster checked for clogs or restrictions.

SINGLE LEVER VALVE - No adjustments are necessary.

DIVERTER ROD - The Diverter Rod is in the center of the Spout, which has the black knob on top. If this rod should become dry and sticky resulting in it not dropping automatically when the water is turned off, you should lubricate it, with Plumber's Grease or nontoxic silicon grease available at hardware stores and home centers, so it will operate normally.

HOSE ASSEMBLY - The hose assembly is constructed of the finest materials available and with proper care will last a number of years. Your DISHMASTER® is designed so this hose assembly can be replaced with a minimum amount of effort. (Complete installation instructions are included with replacement assembly.) The only care required for the hose is to keep the outside clean and back-flushing as necessary.

BRUSH - Your all nylon brush is a nylon dishcloth with a built in scraper, which will give you many months of service with the proper care and use. To clean the brush you merely flatten it out against the bottom of your sink and run hot suds through it. If your brush becomes discolored or grease coated, a little bleaching type cleanser such as Ajax, etc., will remove all grease and discoloration. Nylon brushes are replaceable at a nominal cost. (There are also available white nylon brushes, heavy duty Pot and Pan brushes and vegetable cleaning brushes). To remove the brush, you merely turn the brush $\frac{1}{4}$ turn to the left and pull it off. To put the brush on, you engage the two lugs on the inside of the brush into the slots in the brush adapter and turn $\frac{1}{4}$ turn to the right.

Special Care Instructions

WARNING: Do not use any cleaning solutions on this product other than mild soap and water. Use of commercial or industrial strength cleaning solutions will destroy this DISHMASTER'S® finish and may chemically weaken its plastic parts. Such action could further cause the product to fail mechanically. Decorative finishes are delicate and require special attention to ensure their beauty. Clean your DISHMASTER® only with mild soap and water. Do not use abrasive or industrial strength cleansers on this product.

FIGURE 4

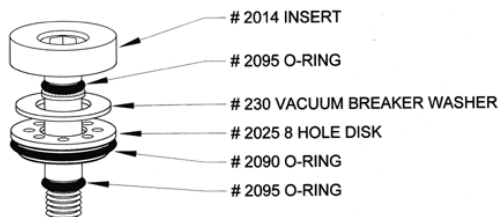
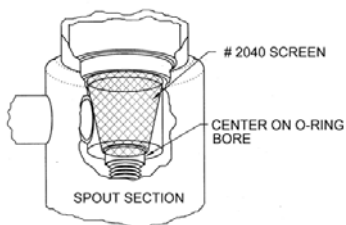


FIGURE 5



NOTE: Water quality causes the most variations in performance of the DISHMASTER®. Water conditions vary throughout the country.

"LIMITED"

Manufacturer's Warranty

We warrant that this "DISHMASTER"[®] has been thoroughly checked and water tested before shipment, and to the best of our knowledge, is free of mechanical and material defects. Should defects due to faulty material or workmanship under normal installation, use, and service develop within FIVE (5) YEARS from the date of purchase, we, the manufacturer, will furnish you, at no charge, the necessary parts to replace said defective part or parts. We will not be responsible for any product damage due to installation error, product abuse, adverse water conditions or product misuse, whether preformed by a contractor, service company, or yourself.

This warranty does not include rubber parts, brushes or decorative finishes. THIS WARRANTY IS LIMITED TO DEFECTIVE PARTS REPLACEMENT ONLY, LABOR CHARGES AND/OR DAMAGE INCURRED IN INSTALLATION, REPAIR, OR REPLACEMENT, AS WELL AS, INCIDENTAL AND CONSEQUENTIAL DAMAGES CONNECTED THEREWITH ARE EXCLUDED.

Some states do not allow the exclusion or limitations of incidental or consequential damages, so the above limitations or exclusions may not apply to you.

KEEP YOUR SALES SLIP TO ESTABLISH DATE OF PURCHASE.

NOTE: For any and all concerns related to the installation and operation of your DISHMASTER, contact the manufacturer.

This Warranty applies to the United States of America ONLY. All "Foreign Countries" contact your Local Dealer or Importer for your Warranty Rights & Procedures for Any necessary service.

SilverStream LLC.

Bloomington, IN, USA

A PRODUCT OF THE - SilverStream LLC Bloomington, IN.
**Manufactured under one or more of the following PATENT, DESIGN AND
REGISTRATION NUMBERS**

**4183501, 4187875, 1611041, 130034, 189179, 253770,
406702, 548100, 873274, 730562, 732950**

NOTICE - We are constantly improving the design and make-up of the parts used in this Dishmaster[®]. We incorporate these improvements, when developed and thoroughly tested, into production immediately. Improvements, made in this manner are interchangeable with the parts they replace.

You may feel that some new parts you receive will not fit because of a slight difference in appearance between the old and new parts. This is not the case. Whenever new style parts are supplied on a parts order, they are interchangeable with the old parts.